



Parvatibai Chowgule College of Arts and Science Autonomous

Accredited by NAAC with Grade 'A' (CGPA Score 3.41 on a 4 Point Scale in 3rd cycle)
Best affiliated College-Goa University Silver Jubilee Year Award

RESEARCH FACILITIES AT CHOWGULE COLLEGE:

As research is the key focus of this institute, management of the college introduced specialized research laboratories such as Geographical information services Lab(GIS), Photogrammetry Lab, Human Genetic Research lab, Plant Physiology lab and Analytical Lab. Besides these, the college harbors well equipped library and a wi-fi campus.

- 1) Geographical information services Lab(GIS):** GIS Lab has 20 computers with loaded with GIS software ArcView 10, ArcGIS Master Lab kit, software for image processing like ENVI 4.6 and IDL for modeling. In addition all computers have programming facilities like C, C++, Visual Basic 6.0, and graphical facilities like AutoCAD.

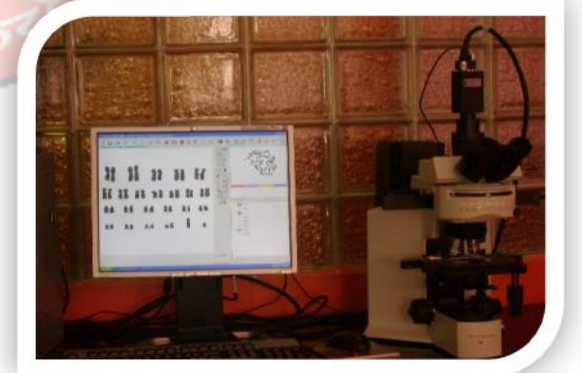


The Geoinformatics Lab is a good asset for research to store, manage, retrieve and represent in digital and iconic modes.

2) Photogrammetry Lab: has the necessary setup along with 20 sets of multispectral satellite data and other *field and navigation Instruments* such as GPS Garmin Map 76CSx, GPS Oregon 550, GPS Etrex Vista HCx, GPS Montana 650, Brunton Compass and Tangent Clinometer and *Survey Instruments such as* Prismatic Compass, Transit Theodolite, Chain set, Chain and Tape Survey set, Plain Table survey sets etc. Post-processing and real-time kinematic (radio frequency 438MHz) range upto 25 Km having accuracy of 1 – 5mm. consultancy projects are carried out at these labs.



3) Chowgules Human Genetic Research Lab(CHGRL):The research at CHGRL is focused on genetic disorders in humans, genetic toxicity studies, and epidemiological studies. The lab has offers internships and trainings in the field of Human genetics, digital Karyotyping, Comet assays, culture techniques and cytogenetic techniques. CHGRL also offers Post Graduate Diploma course in Clinical Genetics and Medical Lab techniques (PGDCGMLT).



4) Plant Physiology Research

Lab: is equipped with all basic facilities in Plant Science Research. Lab also has facility for growing plants under controlled conditions. The equipments available are PCR, rotary vacuum evaporator, UV spectrophotometer and chlorophyll flurometer.



5) Central Research Lab(CRL):

CRL was established in 2018, to strengthen and upgrade available science research facilities to advanced research & training to enable researchers to take up challenging research projects. It harbors high-end research instruments viz Gel Doc, Tissue culture facilities etc. This was funded through RUSA and DBT star college scheme.



6) Analytical Lab: The Instrumentation Laboratory is well equipped with the following sophisticated instruments such as FTIR spectrophotometer, atomic spectrophotometer, TG-DTA analyser, Differential scanning calorimeter and Gas Chromatography.



7) Environmental Research Laboratory has equipments for soil and water testing. The laboratory maintains sufficient analytical and support instruments/ equipment for conducting analytical operations since modern analytical laboratory depends heavily upon instrumentation.

8) Plant tissue culture laboratory: of the department of Botany has the facility for carrying out callus cultures. The laboratory enables faculty and students to carry out research in plant tissue culture.

सा विद्या या विमुक्तये